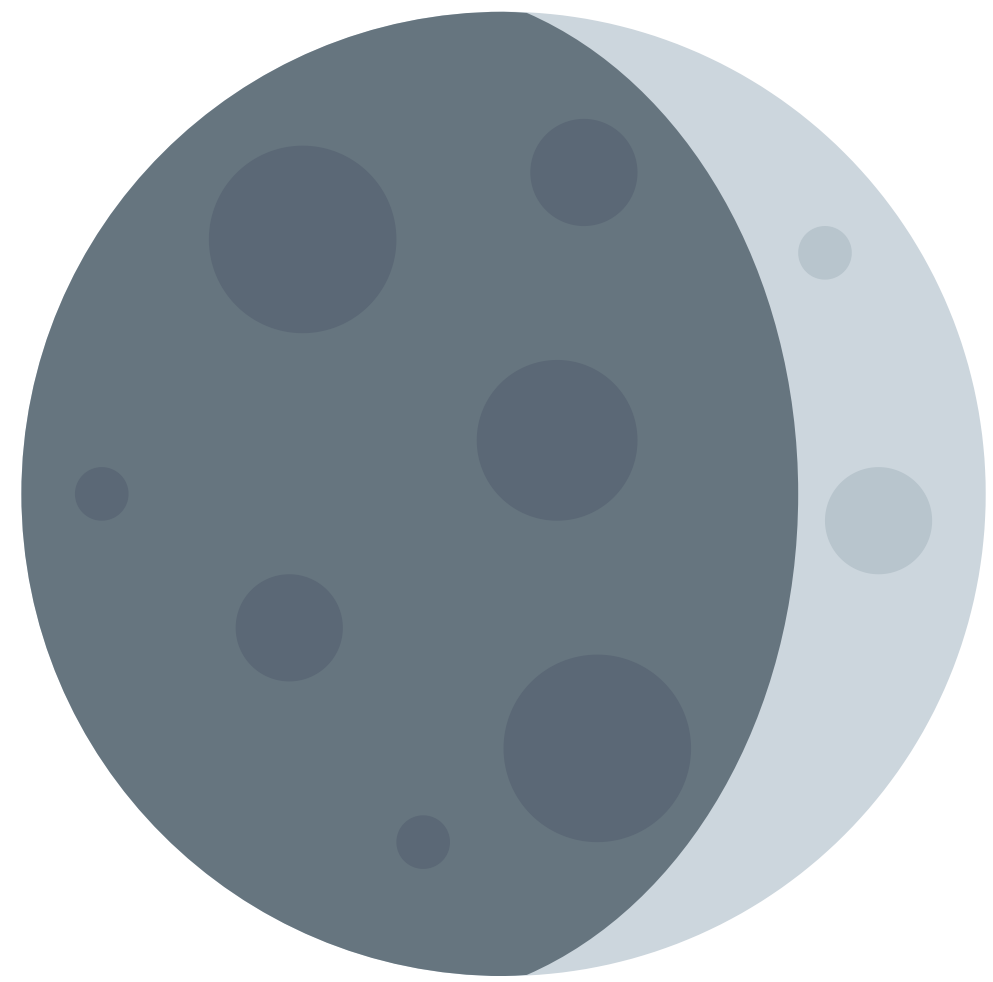
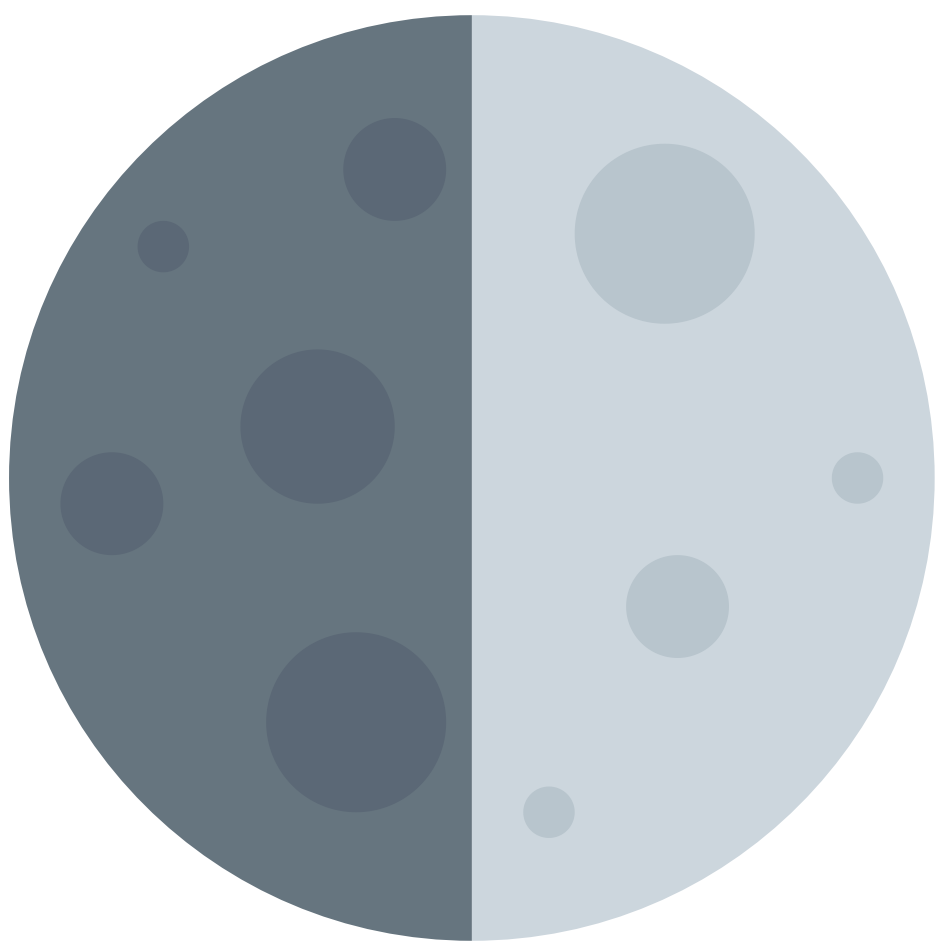


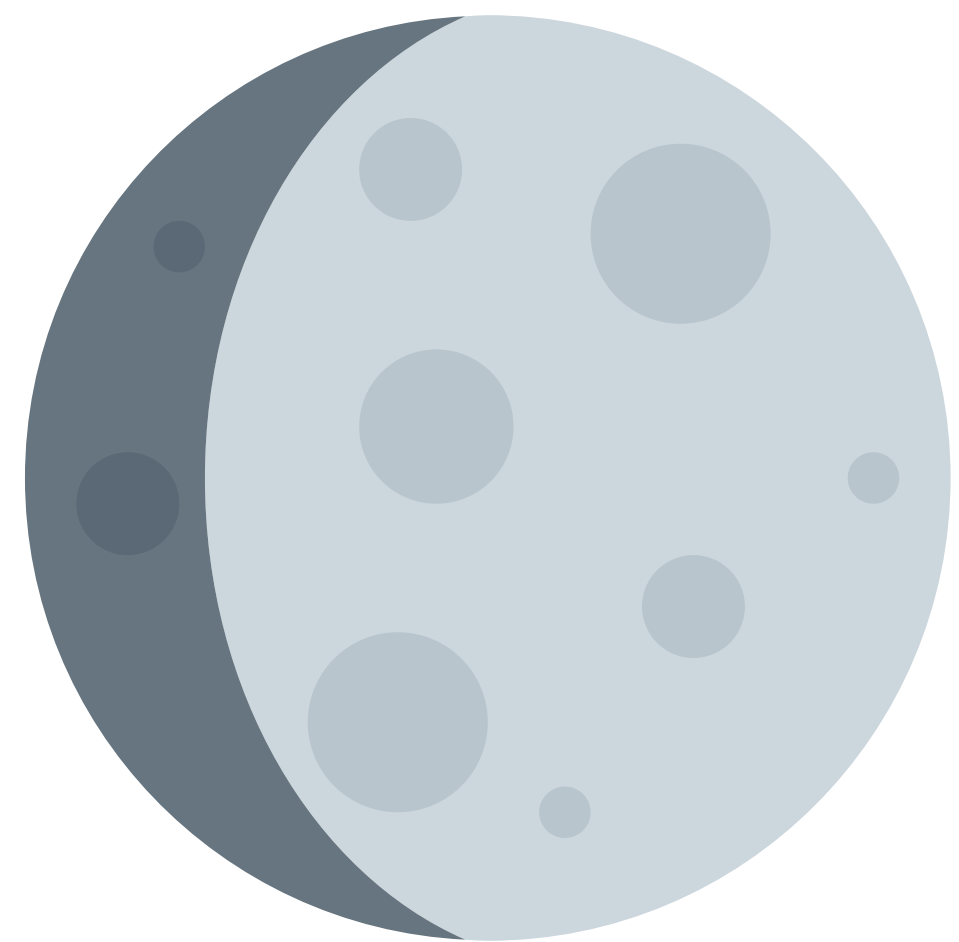
January
Spirit Moon
Manidoo Giizis



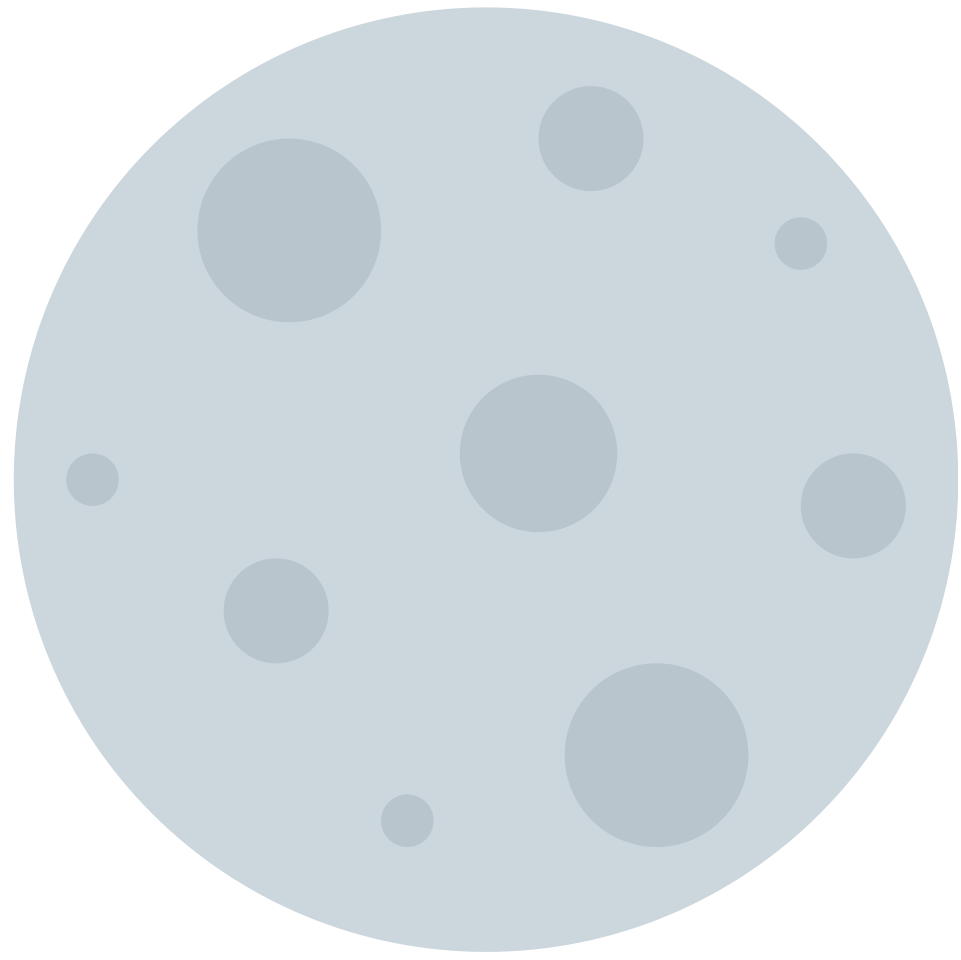
February
Suckerfish Moon
Namebini Giizis



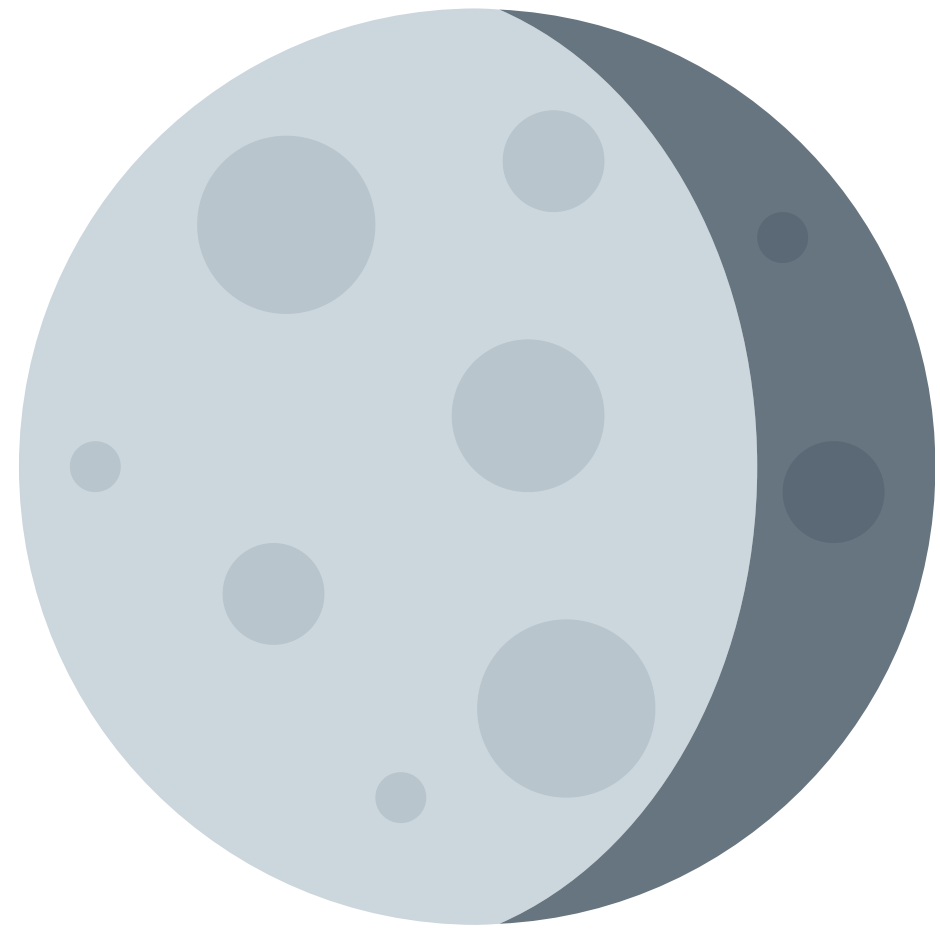
March
Hard Crust Moon
Onaabani Giizis



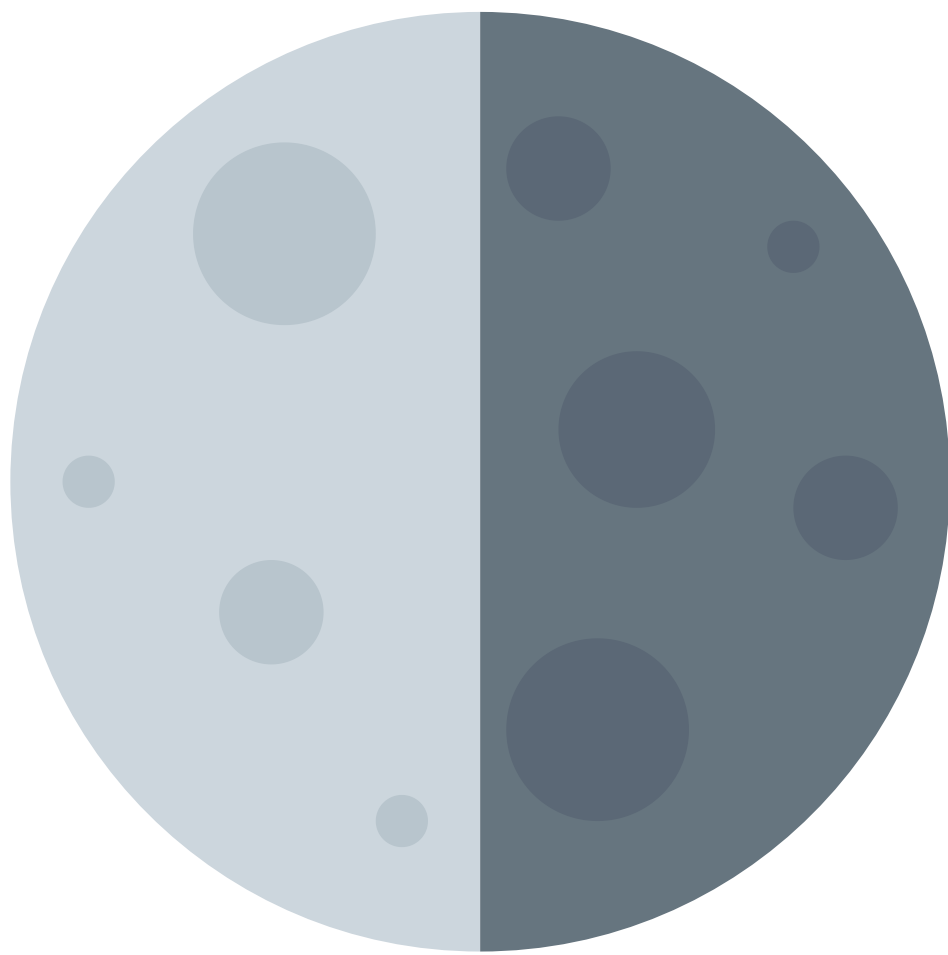
April
Boiling Sap Moon
Iskigamizige Giizis



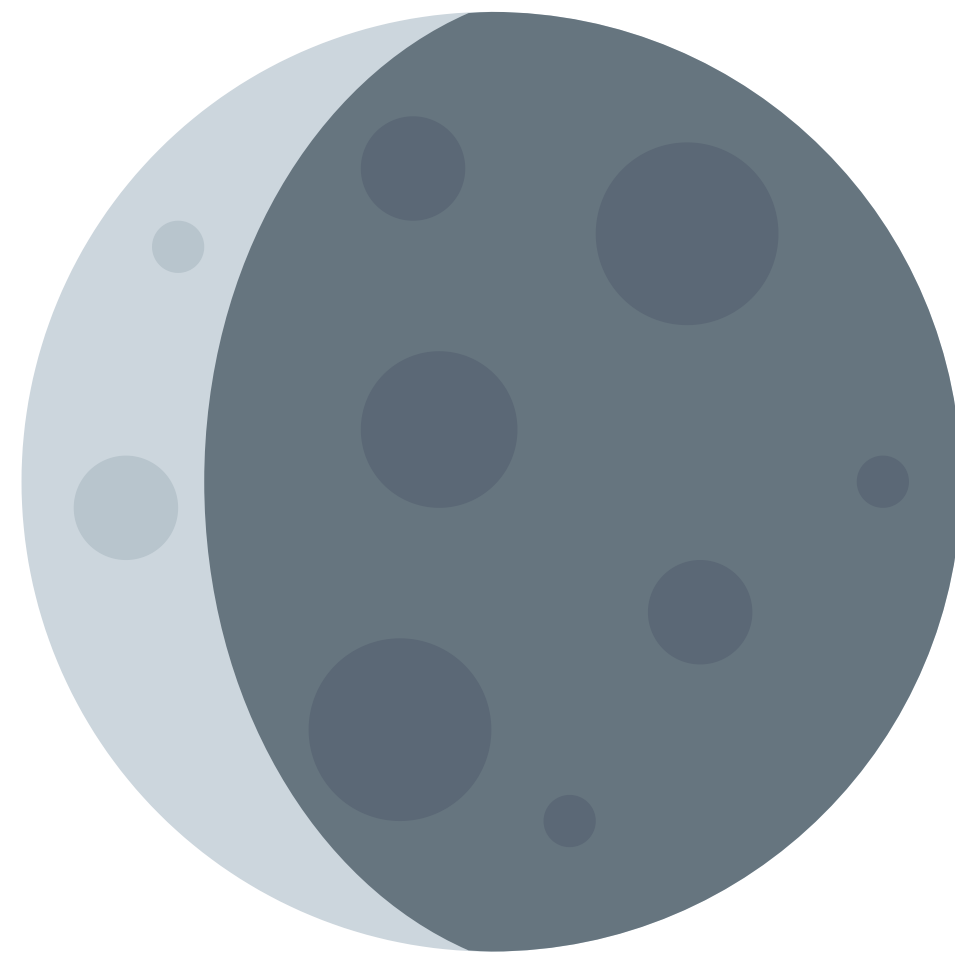
May
Budding Leaves Moon
Zaagibagaa Giizis



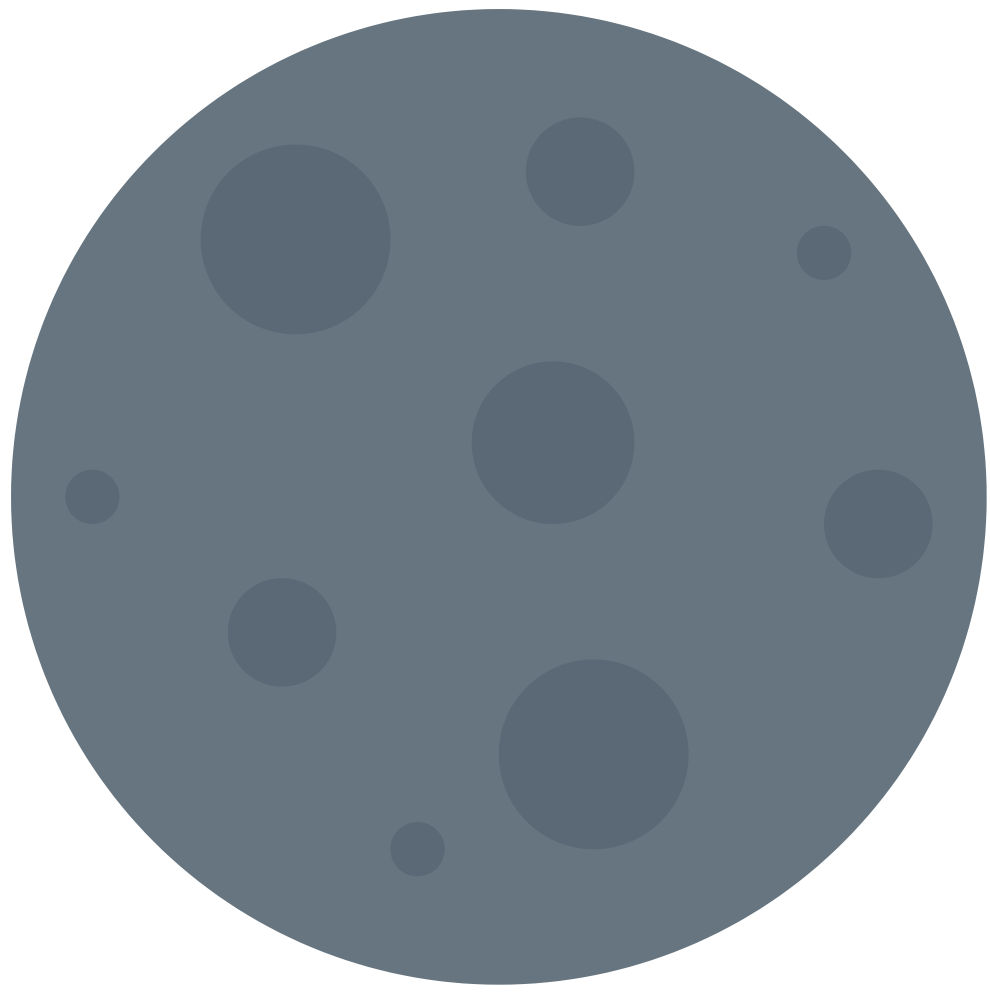
June
Strawberry Moon
Ode'imini Giizis



July
Mid Summer Moon
**Aabita-niibino
Giizis**



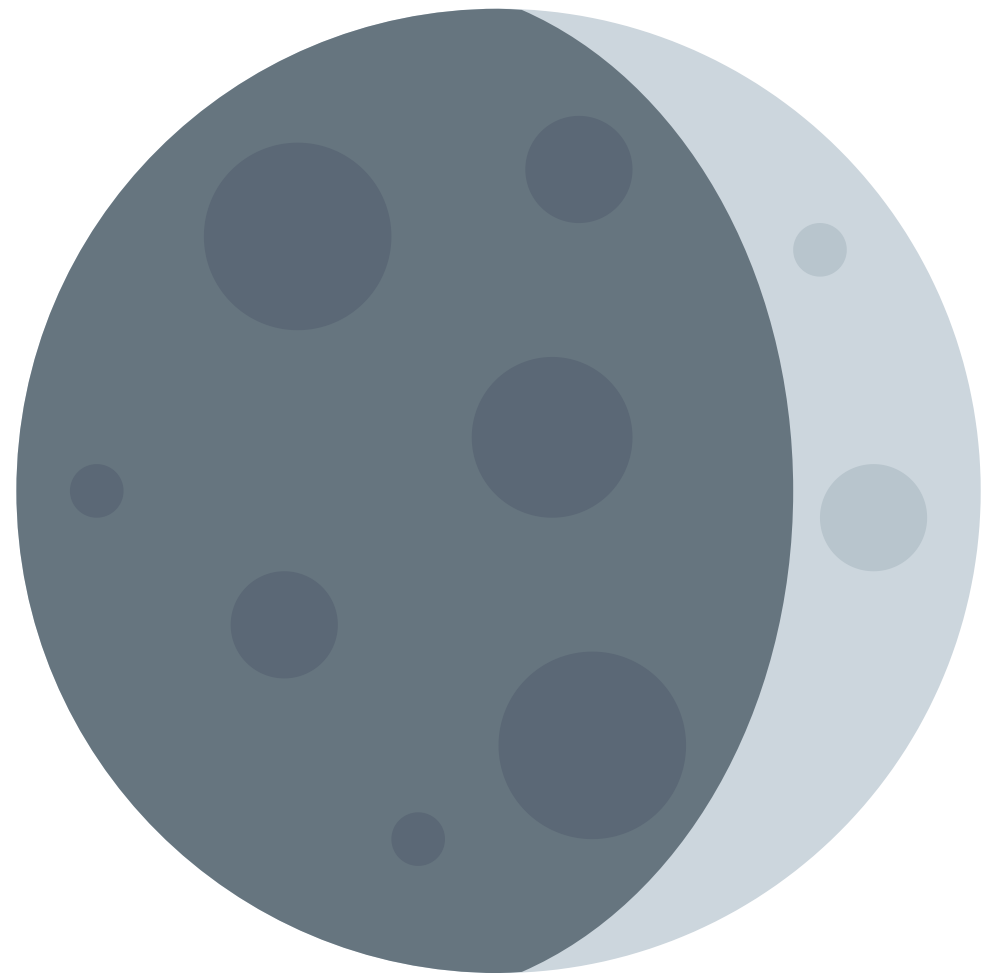
August
Ricing Moon
**Manoominike
Giizis**



September

Leaves Turning Colour Moon

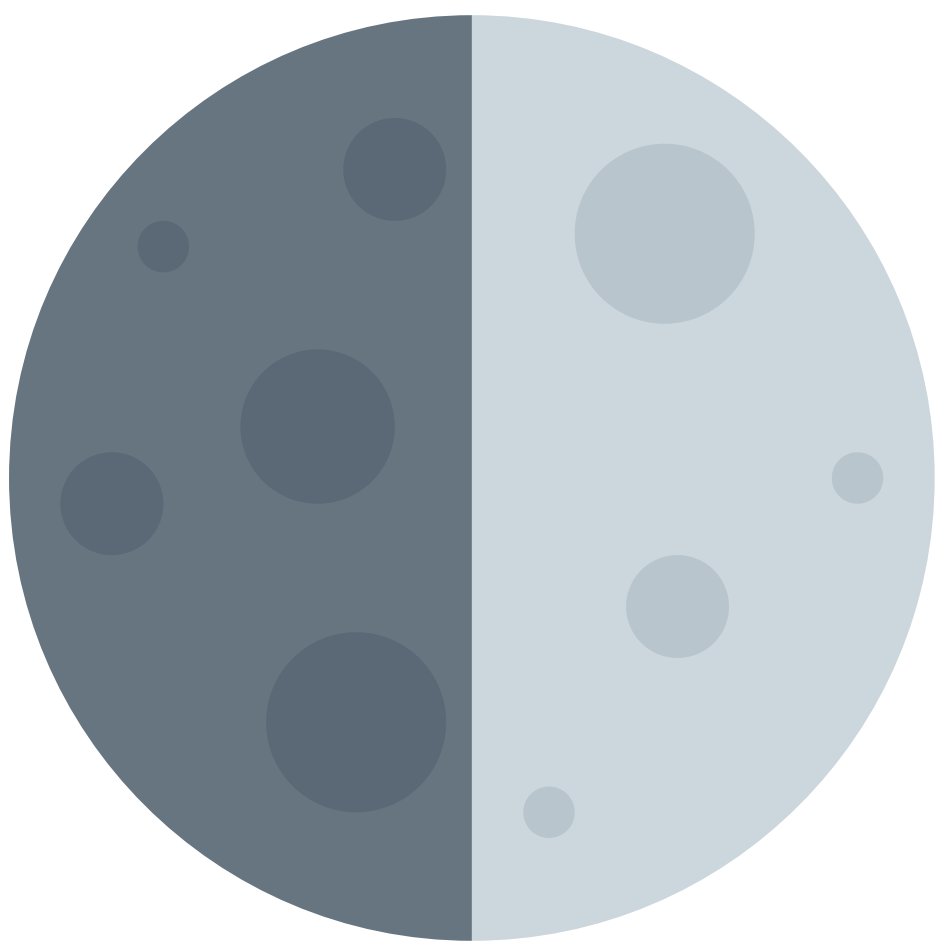
Waatebagaa Giizis



October

Falling Leaves Moon

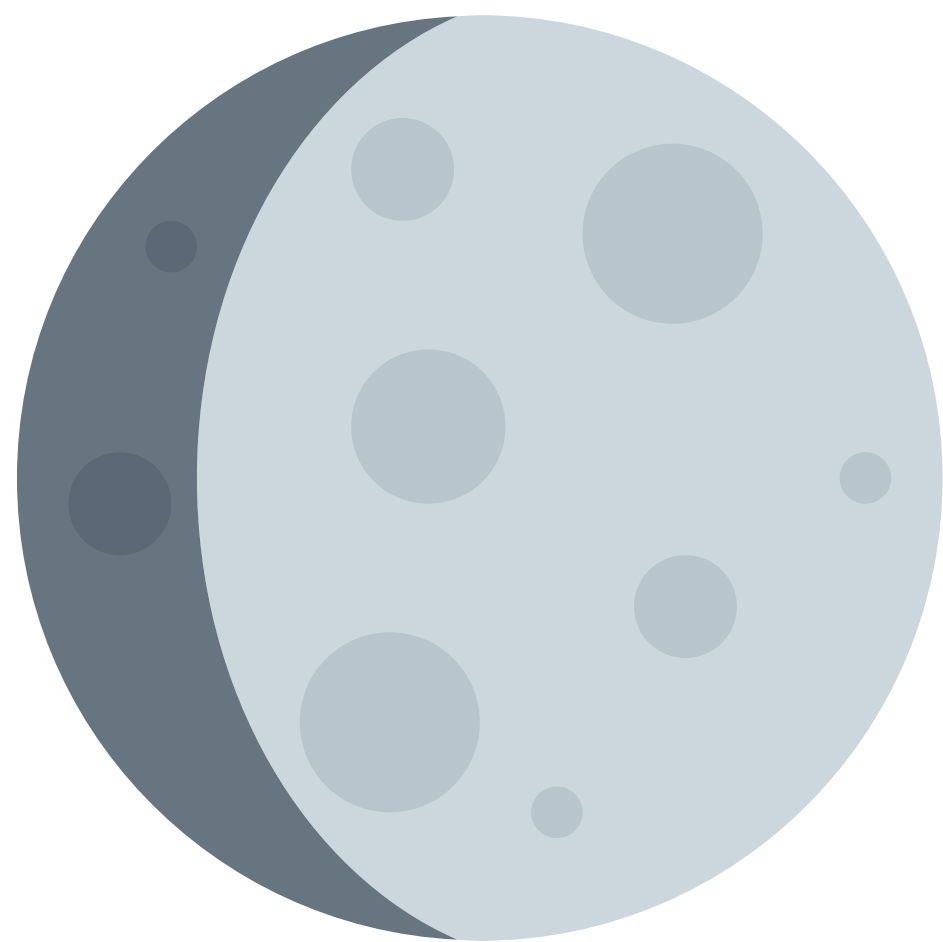
Binaakwe Giizis



November

Freezing Water Moon

Gashkadino Giizis



December

Little Spirit Moon

Manidoo Giizisoons



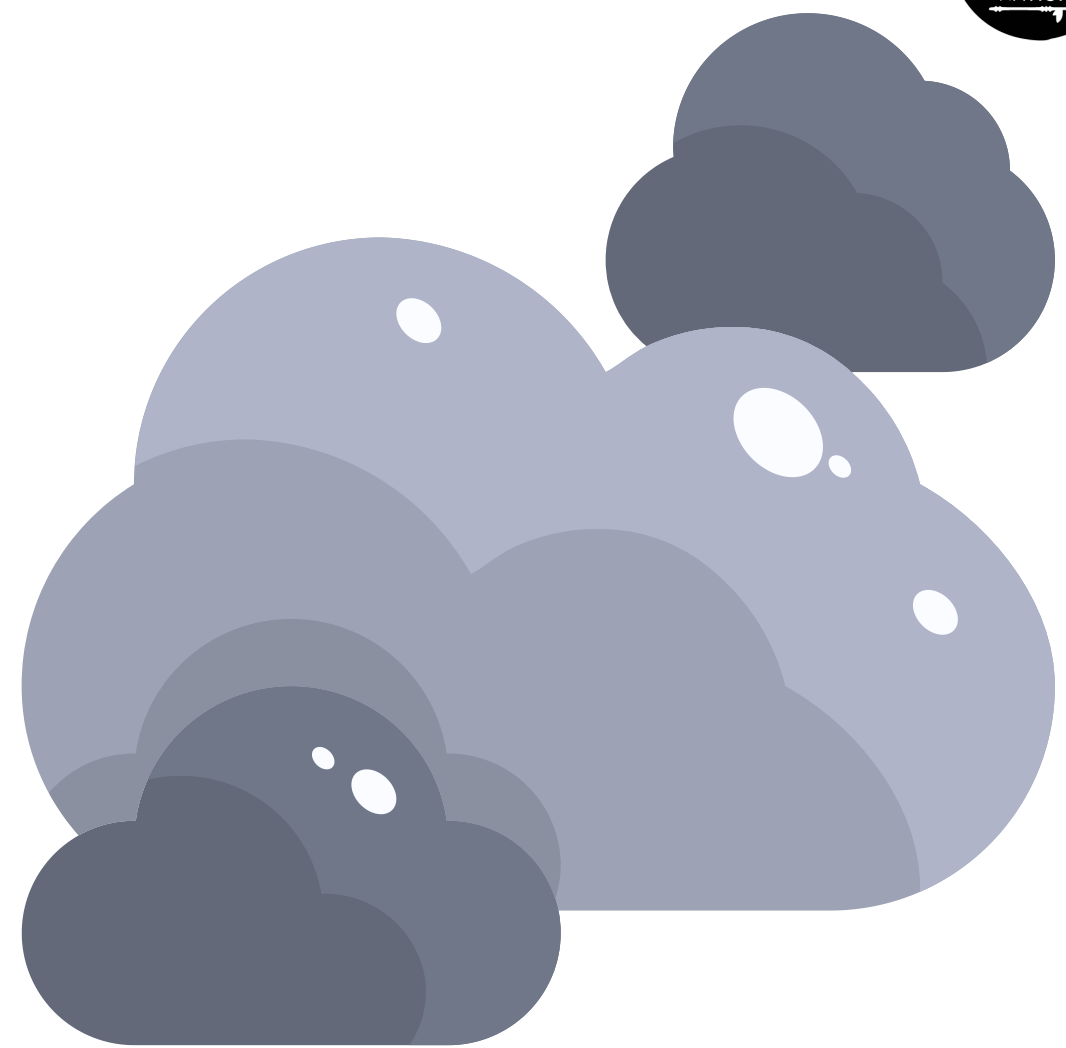
It is Snowing
Zoogpo
 Zo-g-po



It is Sunny
Saagaate
 Saw-gaw-te



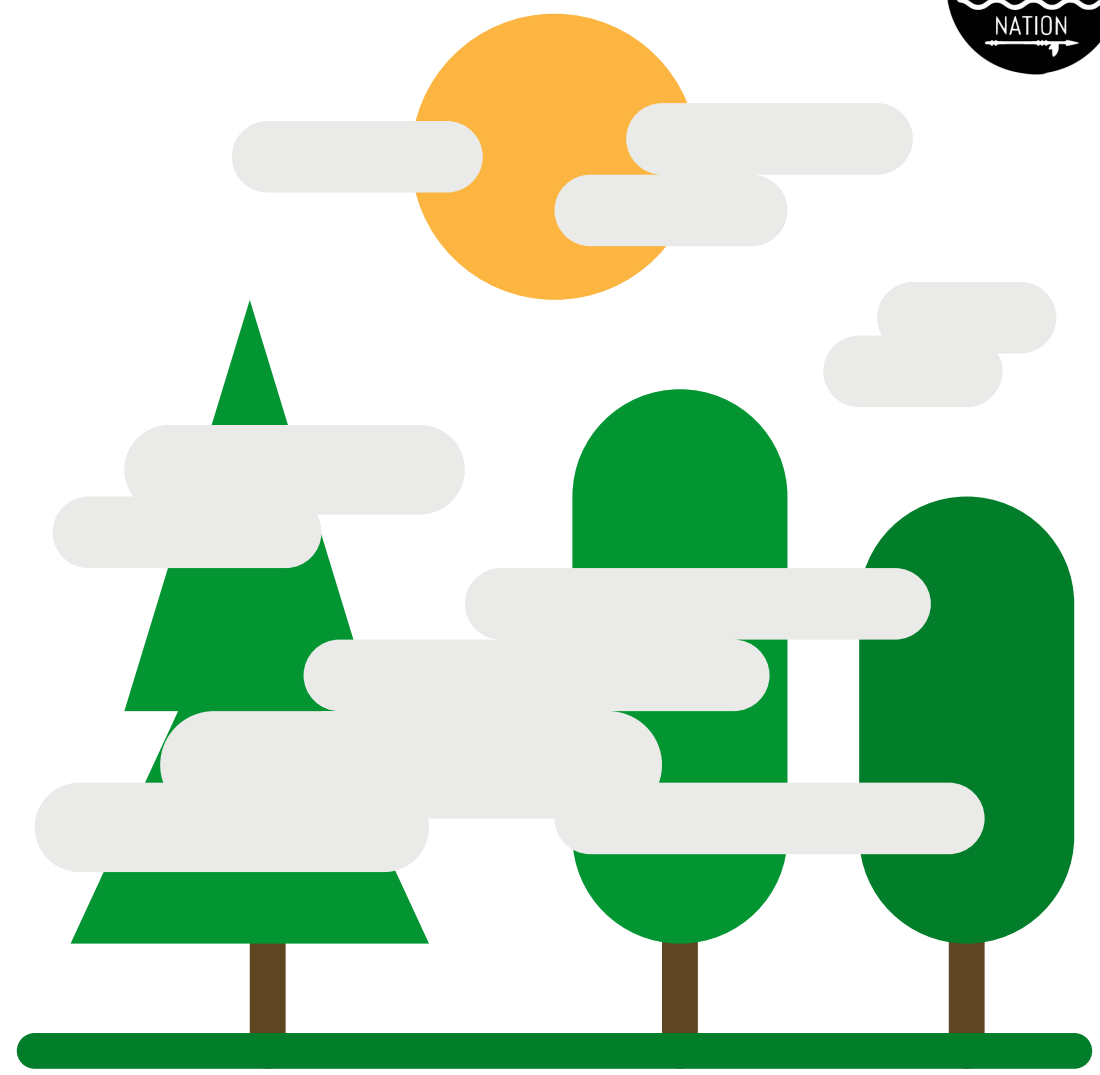
It is Raining
Gimiwan
 ge-mi-wun



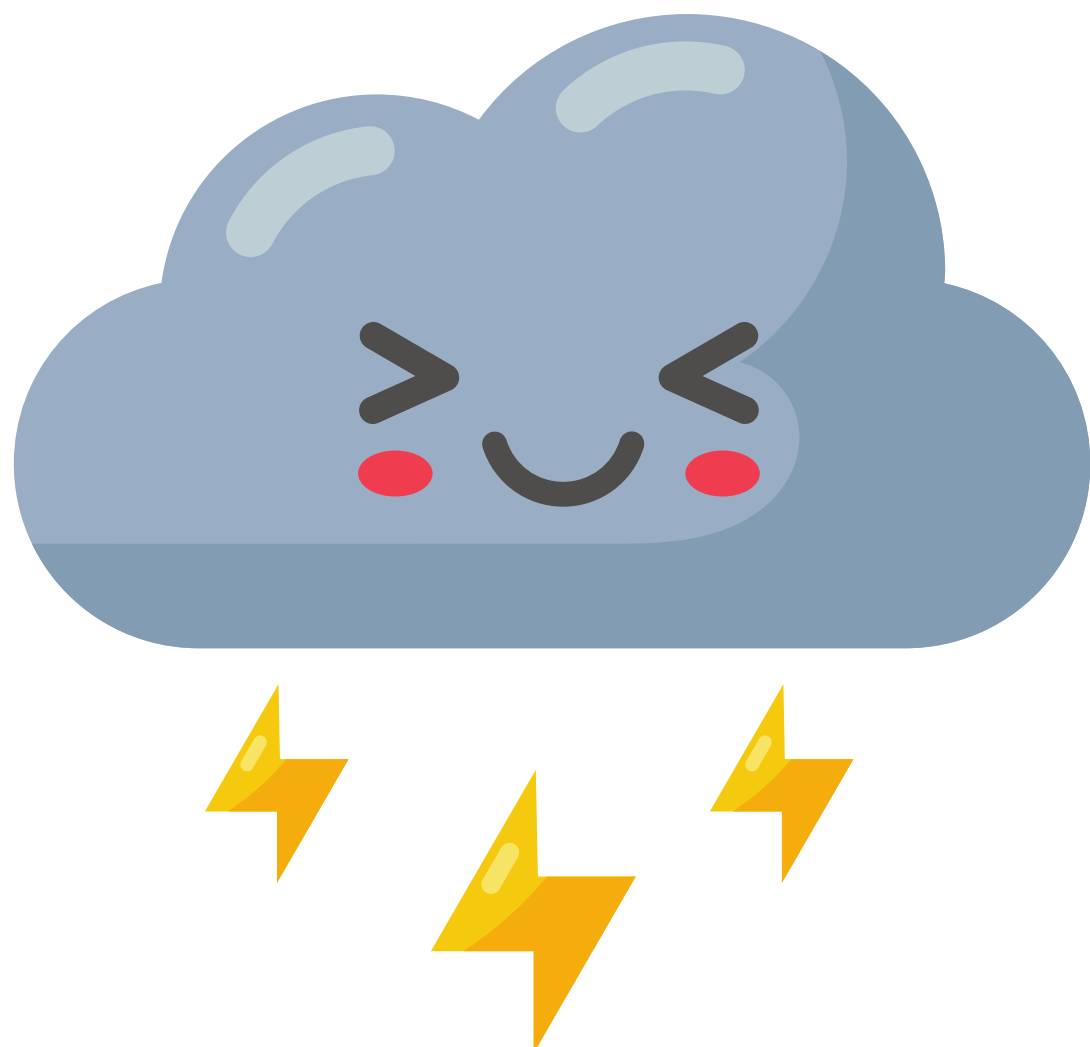
It is Cloudy
Nagwaankwad
 Nu-gwawn-kwud



It is Windy
Nooden
No-den



It is Foggy
Wan
Wun



It is Thundering
Nimkiikaa
Nim-kee-kaw



It is Storming
Taamgwad
Tom-gwud